

ΩmegaForms

OmegaDrive in Windows XP via a Network Drive Letter

Added on August 11, 2012 by [Shawn Brunner](#) under [Configuration](#) | [No updates since posted.](#)

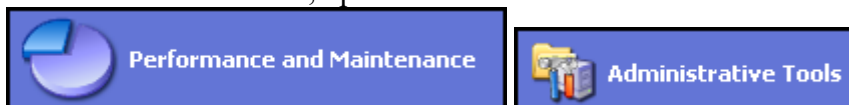
[Home](#) » [Configuration](#) » OmegaDrive in Windows XP via a Network Drive Letter



Here are the steps to connect to your OmegaDrive with a Network Drive Letter via WebDAV from a fresh install of Windows XP on a private, secure computer.

Step 1: Ensure the Windows Service “WebClient” is setup to start automatically when Windows starts.

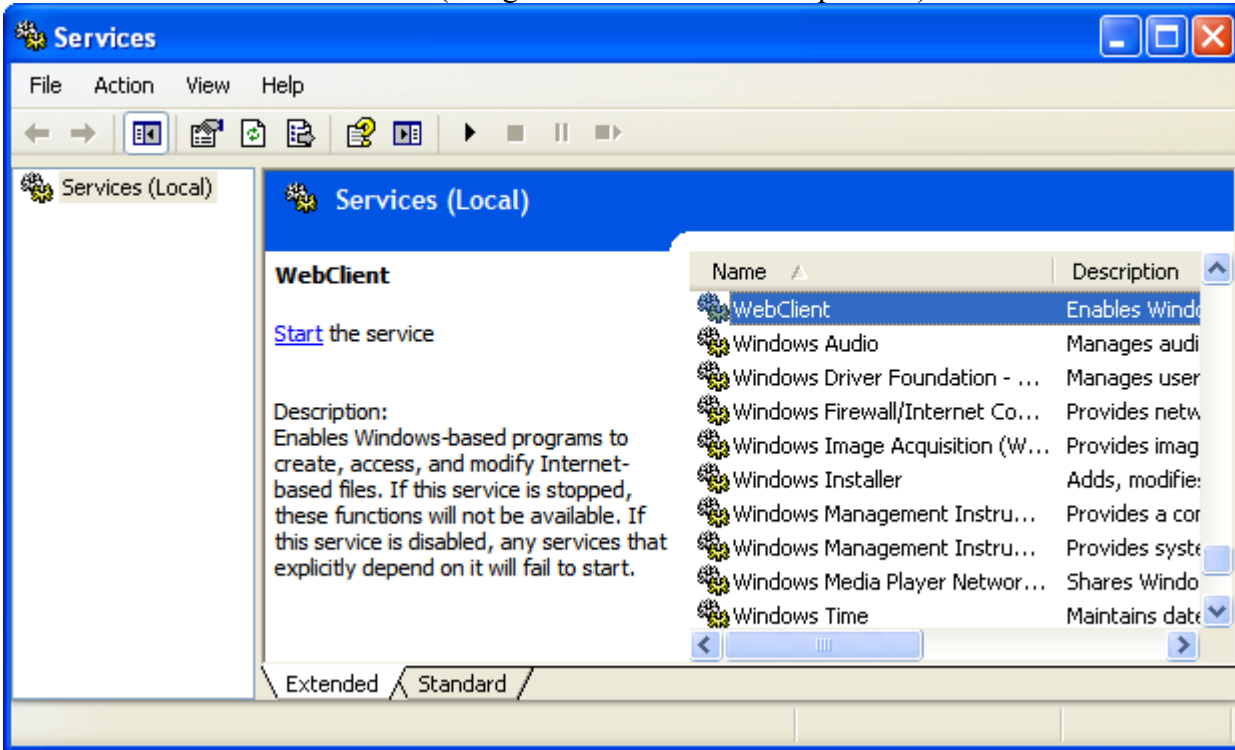
From the Control Panel, open “Performance and Maintenance” and/or “Administrative Tools”.



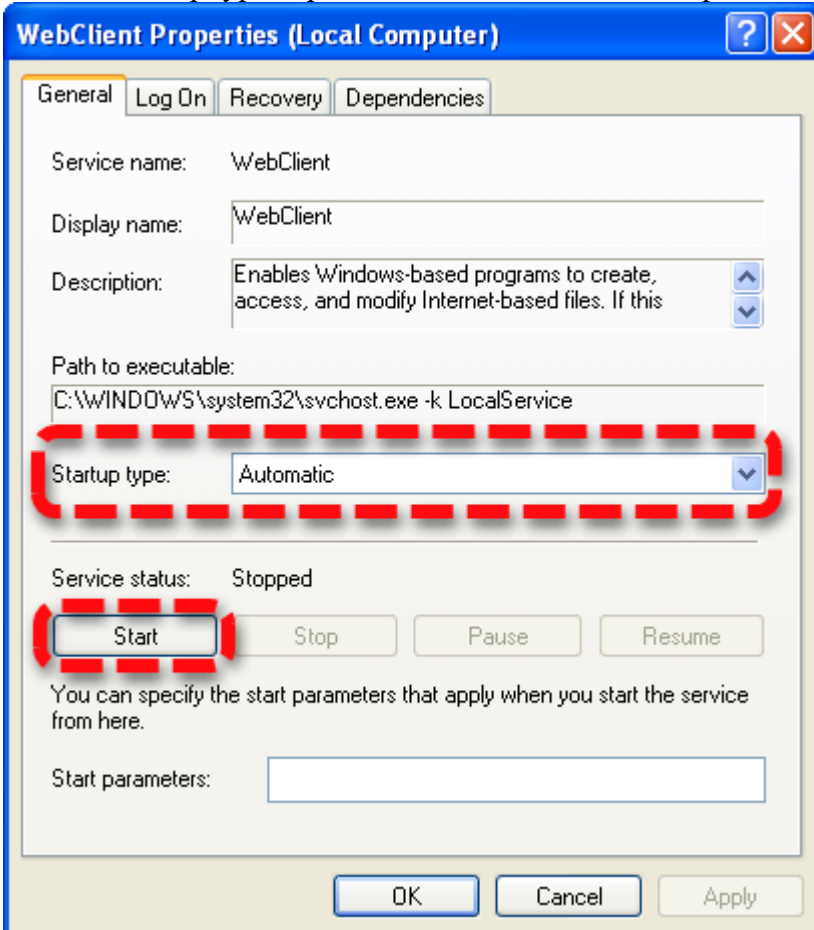
From the list of tools, open “Services”.



Double-click on the “WebClient” (or right-click and select “Properties”).



Set the “Startup type” option to “Automatic” and then press the “Start” button.



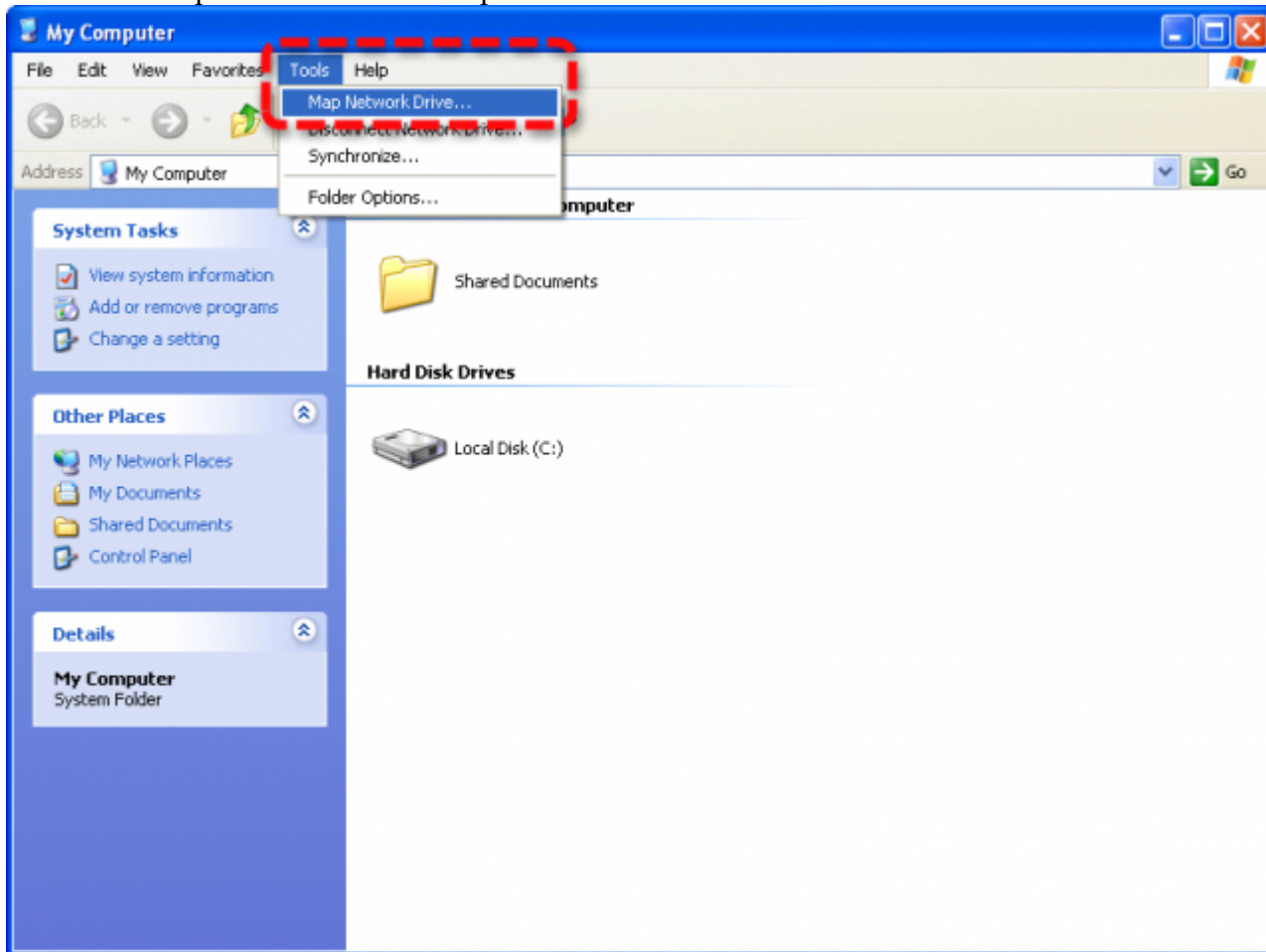
Press the “OK” button and close any open windows.

Step 2: Mapping the Network Drive

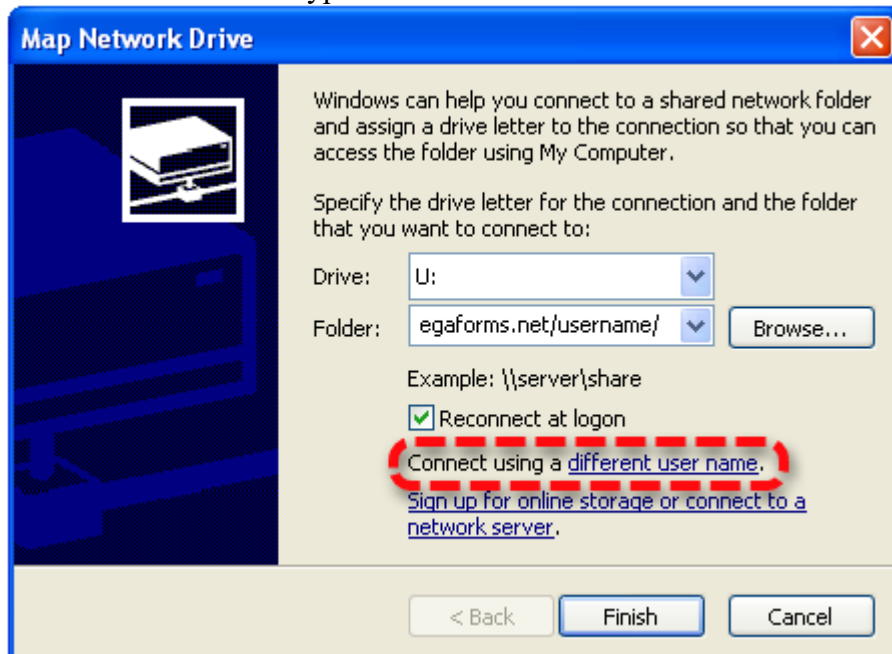
Access the “My Computer” screen.



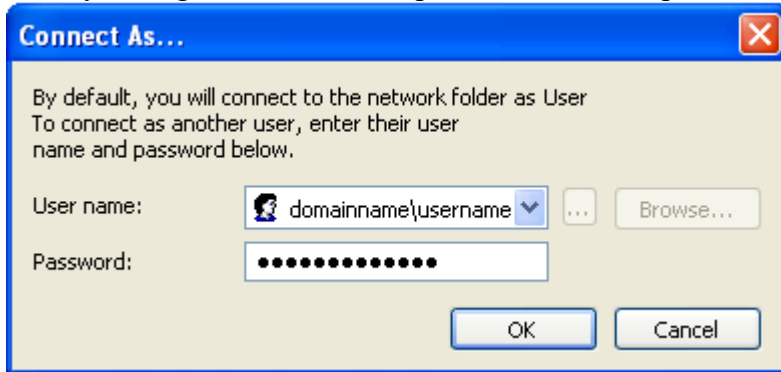
Select the “Map Network Drive...” option.



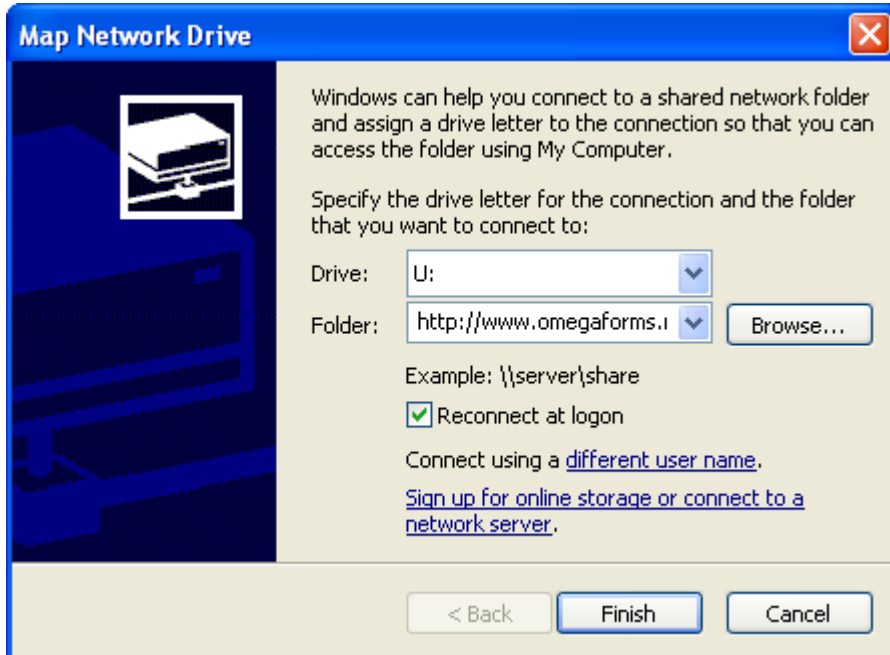
Choose the desired Drive Letter, then enter “http://www.omegaforms.net/username/” for the Folder (replace “username” with your OmegaDrive username). Ensure the “Reconnect at logon” checkbox is checked. Click the “different user name” hyperlink.



Enter your logon username and password and then press the “OK” button.



Press the “Finish” button and you should be able to access OmegaDrive from the Drive Letter you selected above.

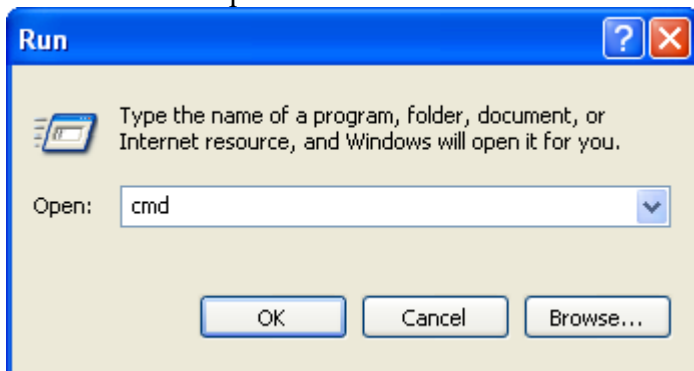


Note: If you encounter an error when pressing the “Finish” button that states “The workstation driver is not installed”, perform the following actions.

Access the “Run” prompt.



Enter “cmd” and press the “OK” button to access the Command Prompt.



Enter the following:

```
net stop webclient <Press Enter>
net stop mrxdav <Press Enter>
net start mrxdav <Press Enter>
net start webclient <Press Enter>
```

```
C:\WINDOWS\system32\cmd.exe
C:\>net stop webclient
The WebClient service was stopped successfully.

C:\>net stop mrxdav
The WebDav Client Redirector service was stopped successfully.

C:\>net start mrxdav
The WebDav Client Redirector service was started successfully.

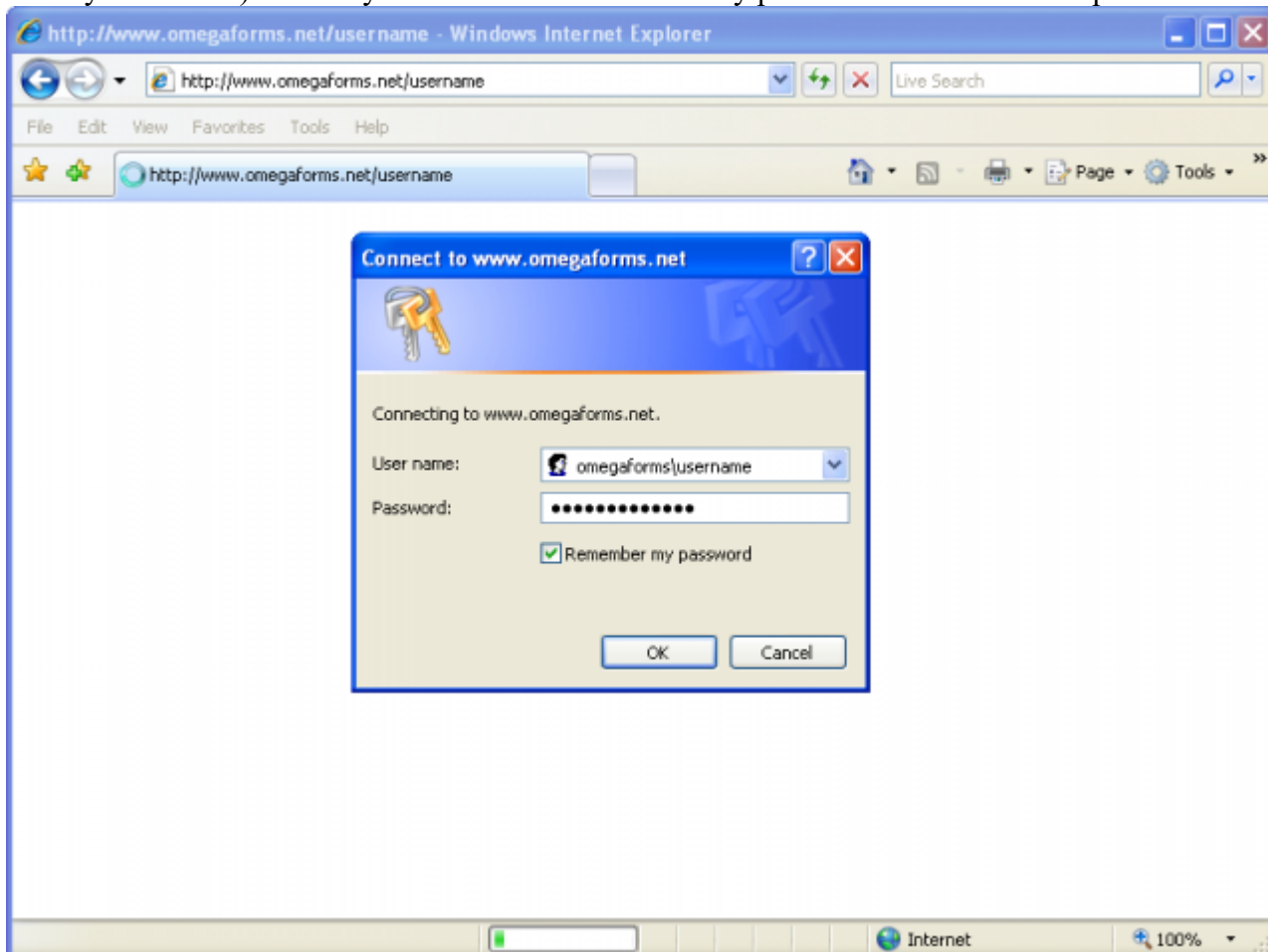
C:\>net start webclient
The WebClient service is starting.
The WebClient service was started successfully.

C:\>
```

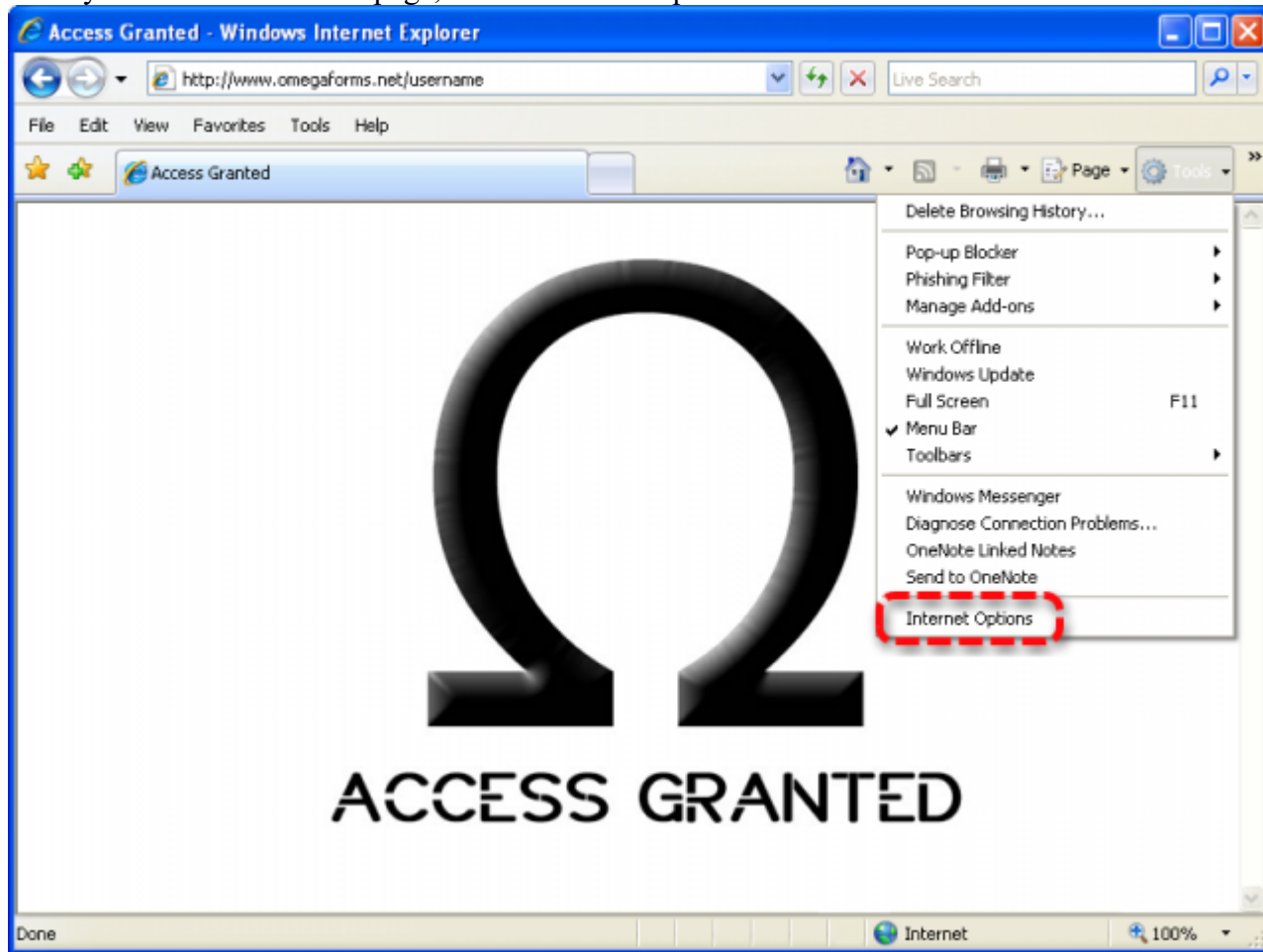
Close the Command Prompt window and then press the “Finish” button again from the Map Network Drive window.

Step 3: Configure your Internet Options

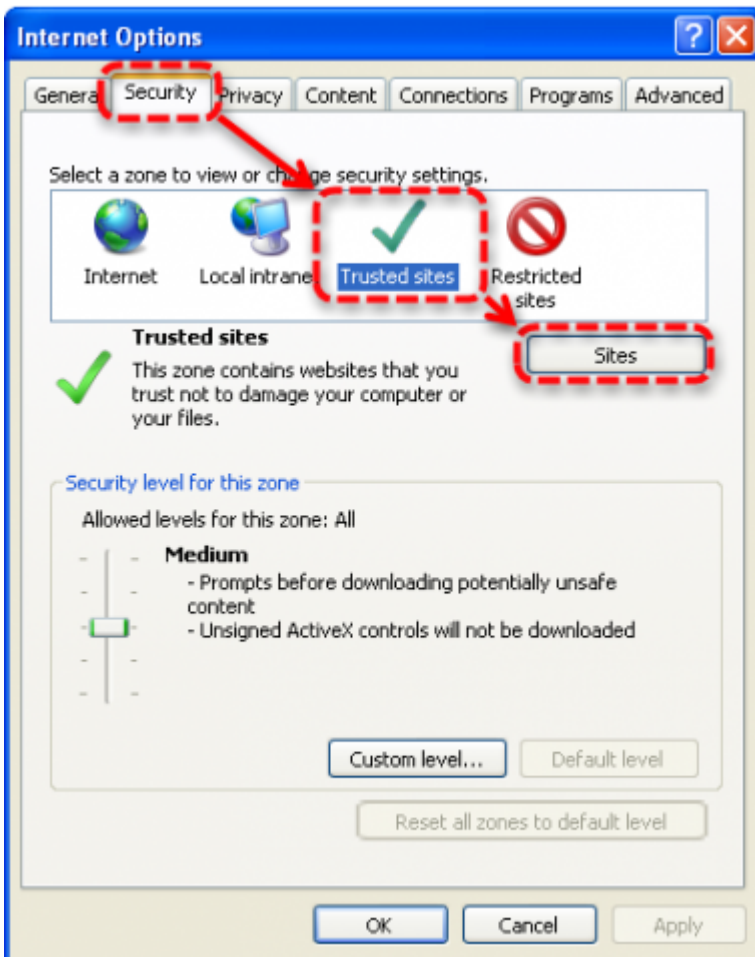
Open Internet Explorer and enter your Folder that you setup in Step 2 into the address bar (“http://www.omegaforms.net/username/”) then enter your login information (note that your username may already be entered). Ensure you check the “Remember my password” checkbox then press “OK”.



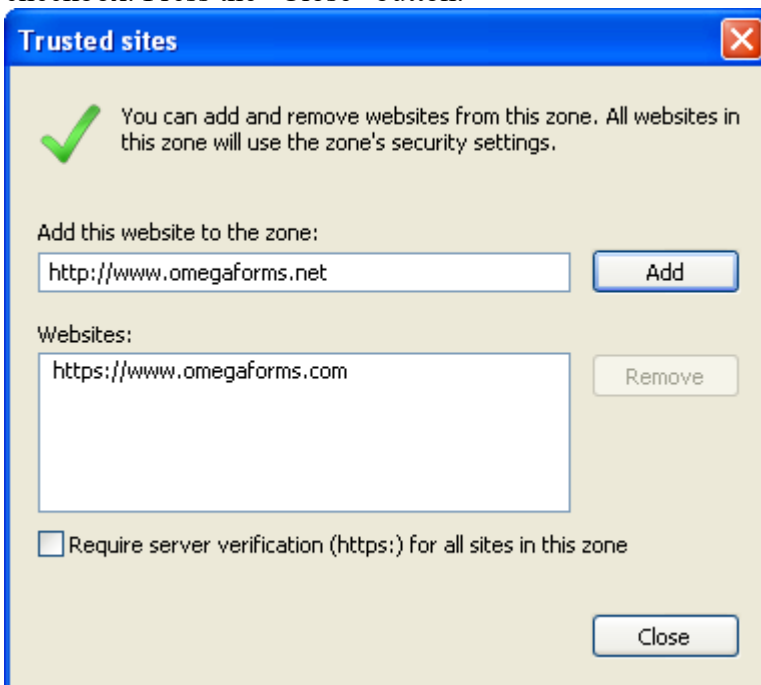
After you have access to the page, select “Internet Options” from the Tools menu.



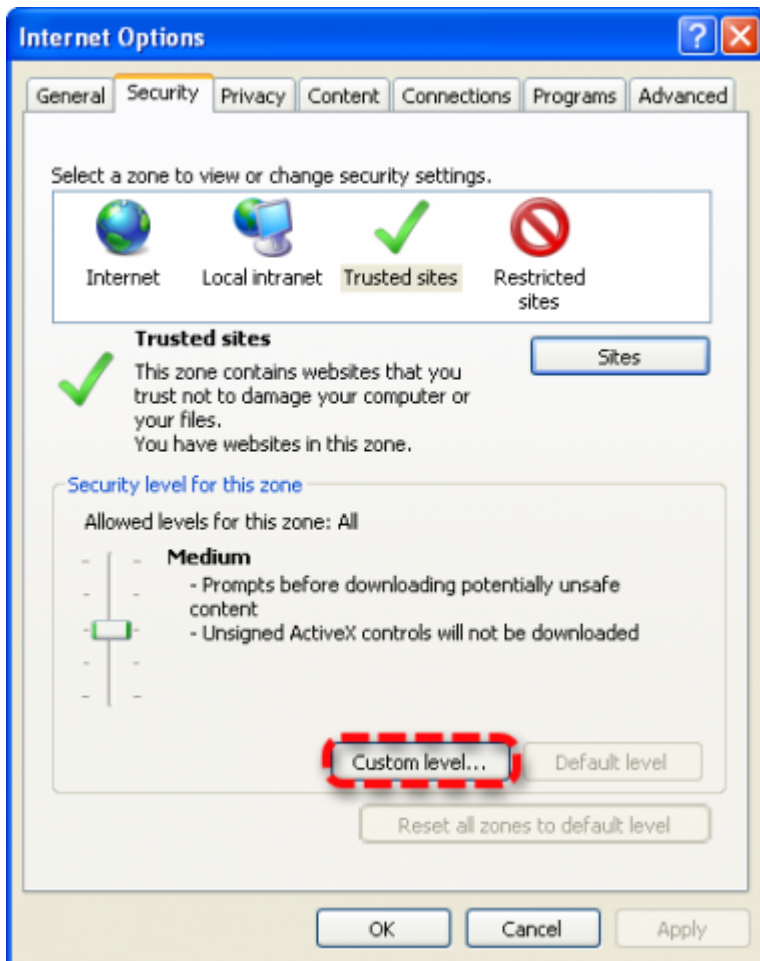
Open your “Trusted sites” from the Security tab.



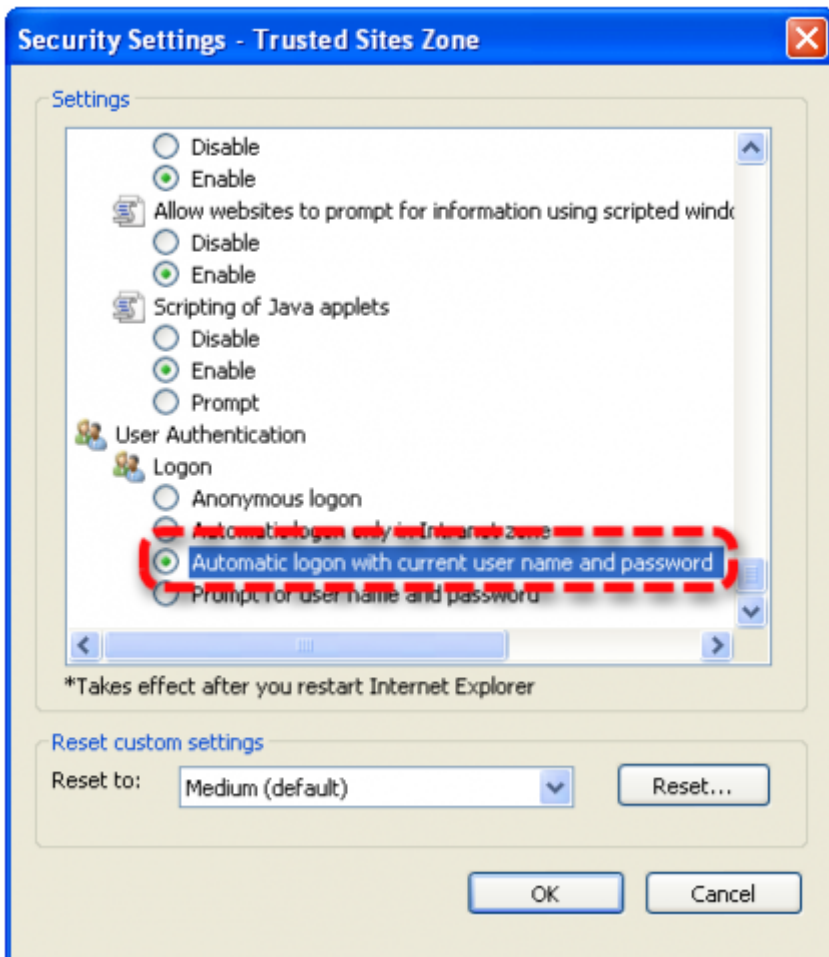
Add "http://www.omegaforms.net" to your Trusted Sites Websites. Uncheck the "Require server verification" checkbox. Press the "Close" button.



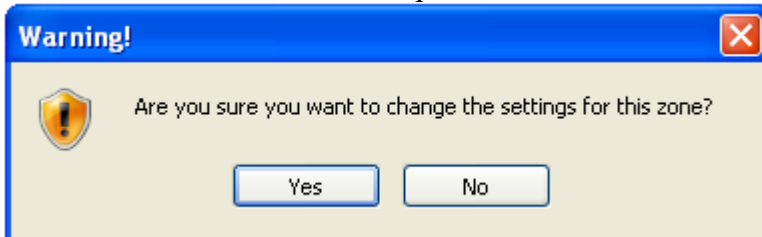
Click the "Custom level..." button to access the Security Settings for the Trusted Sites Zone.



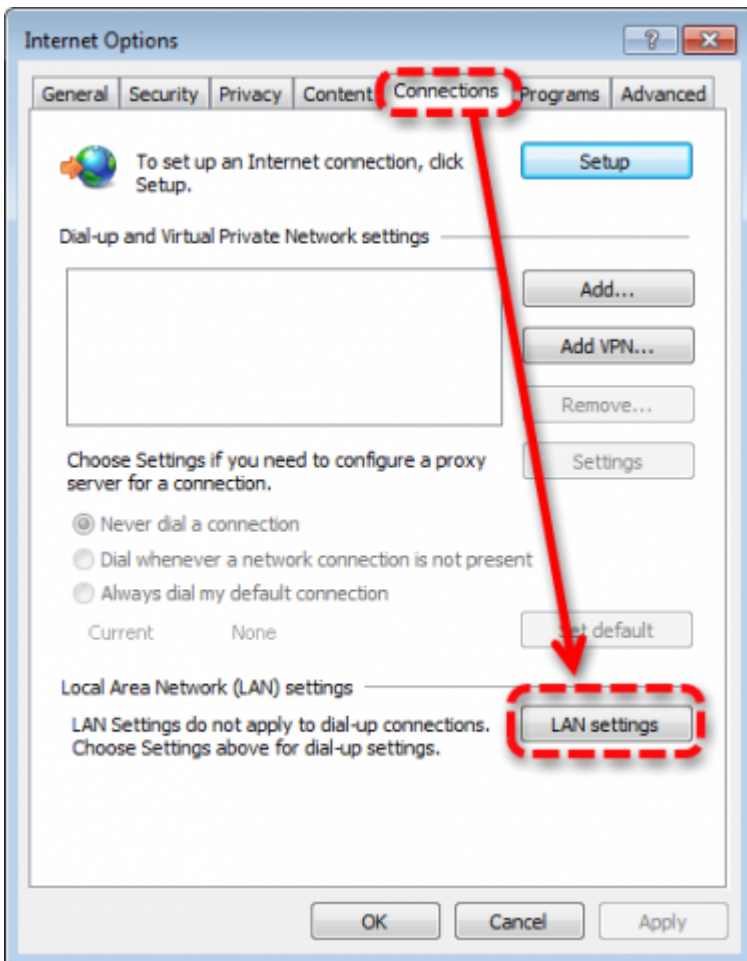
At the bottom of the Settings list, under “User Authentication”, select the “Automatic logon with current user name and password” option.



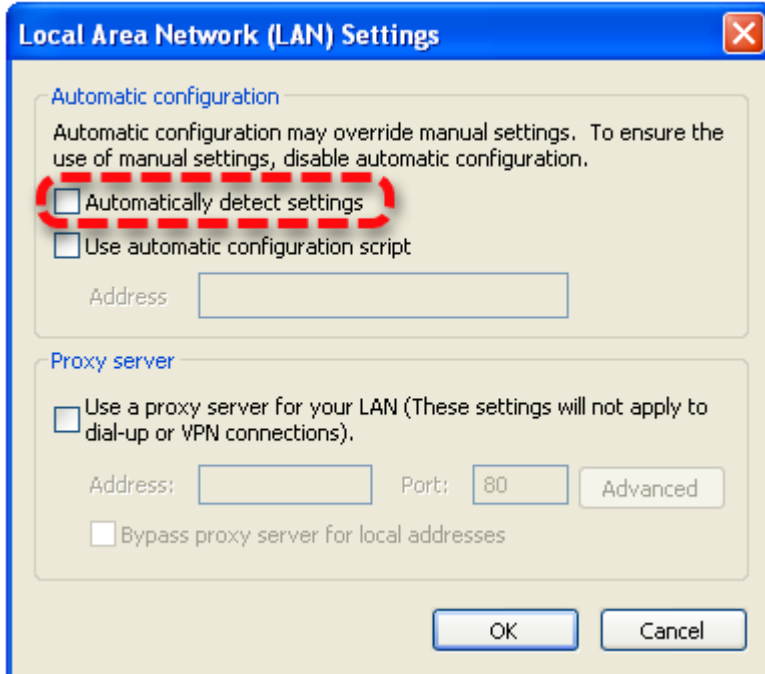
Press the “OK” button and then press the “Yes” button to confirm the changes.



Access the “LAN settings” from the Connections tab.



Uncheck the “Automatically detect settings” checkbox and press the “OK” button.



Press the “OK” button to close Internet Options.